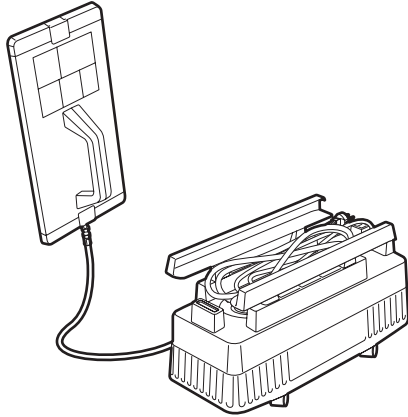


## WALLPAPER STEAMER

### Instructions for safety and use

The wallpaper steam device is designed for safe and quick removal of one or more layers of wallpaper with or without paint coating, texture, textile and vinyl wallpaper.

Use a spike roller to prepare vinyl or multi-layer for steaming off.



### Caution!

Improper operation can injure the user or damage the device. First read the safety instructions on the back of this leaflet!

## SAFETY INSTRUCTIONS



### Safety for user

- Always keep the steam plate facing away from face or body.
- Always use a grounded electrical outlet that is connected via an earthed circuit breaker.
- Keep children and pets out of reach of the device.

### Check before use

- Hose and steam plate for damage.
- Visually for defects.
- Electric power and power cord.

Contact your rental company should you encounter problems with the machine!

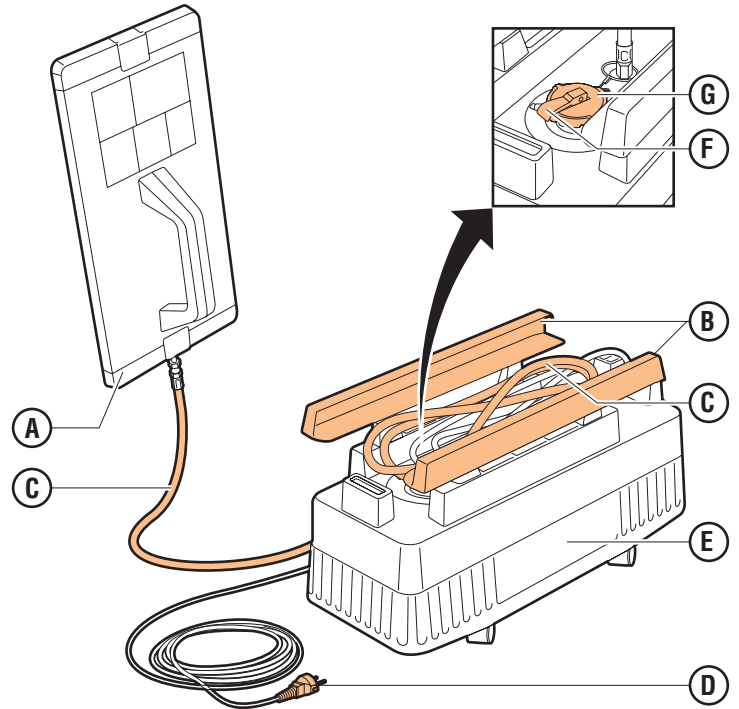
### Safety during use

- Move device only by pushing it; Never pull it by the hose or cable.
- Only place the device on heat and water resistant surfaces.
- Ventilate the area which is steamed.
- Be careful with steam. Risk of burns; Steam and parts of the appliance are hot.
- Be careful with steam. May cause damage to upholstery and furniture and can loosen cracked, porous or weak plaster!
- Only add clean water to the water reservoir.
- Stay with the device.
- Never use the device as a step.
- Make sure no water or steam gets into light switches or power outlets.
- Handle plug and power cord with care.
- Never operate the device with a damaged plug and / or power cord.

### Safety after use

- Immediately after use, disconnect the power cord.

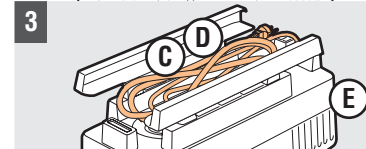
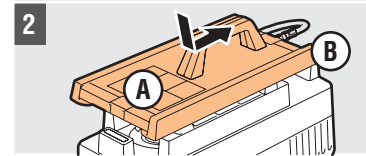
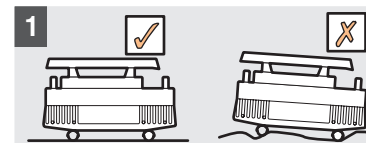
## 1. OPERATING FUNCTIONS



- A Steam plate  
B Rails  
C Steam hose  
D Power cord with plug

- E Water reservoir  
F Securing clamp  
G Fill cap

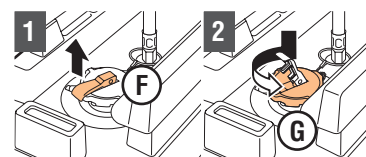
## 2. PREPARATION FOR USE



### Preparation use

**Caution!** Protect or remove furniture and upholstery!

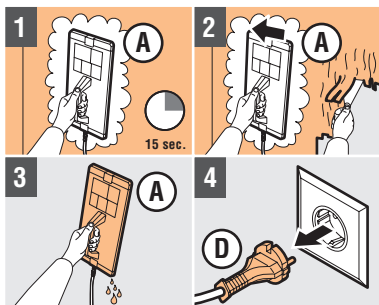
- 1 Place device on stable surface
- 2 Press **A** Down and slide **A** out of **B**
- 3 Take **C** and **D** from **E** and roll them out



### Filling the reservoir

- 1 Move **F** upwards
- 2 Press on **G** and twist **G** anticlockwise to open
- 3 Fill **E** with clean water up to 5 cm below the top of **E**
- 4 Place **G** Back, press **G** And turn **G** clockwise to close
- 5 Push **F** Down
- 6 Plug **D** In grounded outlet
- 7 Allow the appliance to warm for 10 to 30 minutes until steam discharges regularly from **A**.

### 3. USE OF WALLPAPER STEAMER



#### Steaming

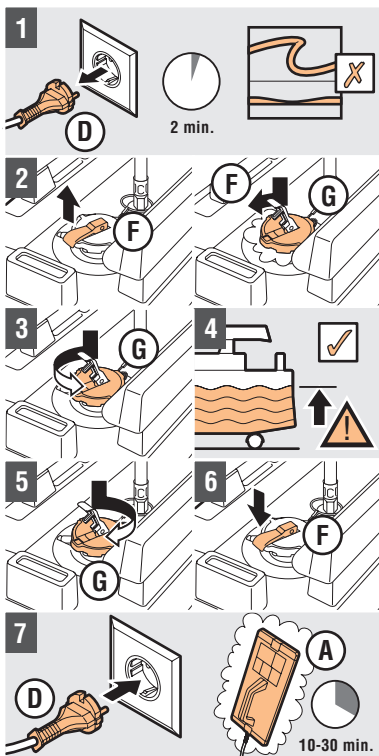
**Caution!** Start with small piece of wallpaper, to establish the effective working of the steamer.

- 1 Hold **A** for about 15 sec. flat against wallpaper
- 2 Move **A** sideways to a new portion, use a spatula to remove steamed wallpaper and repeat steps 1 and 2 until all the wallpaper has been removed

**Caution!** During the steaming process hot water droplets may form. Protect yourself against these droplets!

**Caution!** Make sure that **C** is not kinked or flattened during use!  
**Caution!** Device stops automatically when water reservoir has been depleted!

- 3 Regularly let condensed water run out from **A**
- 4 Remove **D** From power outlet to stop



#### Refill device

- 1 Unplug **D** and wait 2 min.

**Caution!** Verify that **C** is not kinked or flattened so that steam pressure can be released

- 2 **Caution!** Wear gloves, **F, G** and steam are hot!

Flip closing lip **F** Up, gently twist **G** a quarter anticlockwise and allow steam to escape carefully

- 3 Press **G** and twist further to open
- 4 Fill **E** with clean water up to 5 cm below the top of **E**

- 5 Place **G** Back, press **G** And turn **G** clockwise to tighten
- 6 Put **F** Down
- 7 Plug **D** back in grounded power socket, wait 10 to 30 minutes and continue to steam.

### 4. AFTER USE

- 1 Remove **D** from power outlet
- 2 Allow device to cool for at least 5 minutes and remove any remaining wallpaper when device is hand warm
- 3 Wait until water has cooled, open **G** and empty device
- 4 Clean device
- 5 Place **D** and **C** rolled up back on **E**
- 6 Slide **A** back on **B**

**Caution!** Lift device by **A** in such a manner that **A** does not protrude from **B**!