

VIBRATORY COMPACTOR ELECTRIC

Instructions for Use and Safety

The vibratory plate compactor is intended for compaction of loose granular soil, sand and pavement.

Hire a rubber mat to prevent damage to (ornamental) tiles and natural stone.



SAFETY INSTRUCTIONS



- Before operating read the instruction manual carefully, all instructions must be followed.

Caution!

- Danger of hand injury if the hand gets caught in the moving drive belt.
- Never use the machine without V-belt protection cover.
- Always keep hands and feet away from moving parts while the machine is running.
- Do not use the machine in closed and fire hazardous areas.
- Only operate the machine in good lighting.

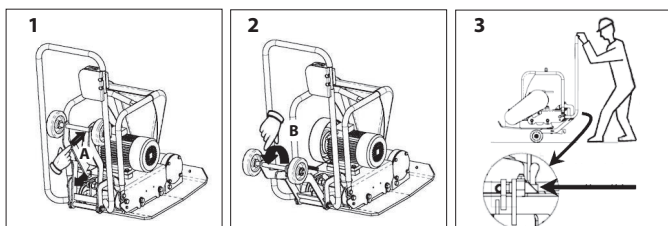
Transport to the workplace:

- To prevent burns or fire hazards, ensure that the engine has cooled down before transporting or storing the machine.
- Secure the machine to the vehicle to prevent slipping or tilting.

Instructions for hoisting the machine

- Never stand or walk under a machine that is being lifted.
- Only use the hoisting hook for lifting the machine.
- Only use tested and approved lifting equipment. Before lifting, check that the vibratory compactor and the frame guard are correctly secured and not damaged.

To lift onto wheels:



- Secure the handle lock pin. (See Figure 3)
- Place the wheels on the ground by pushing handle A forward (See Figure 1)

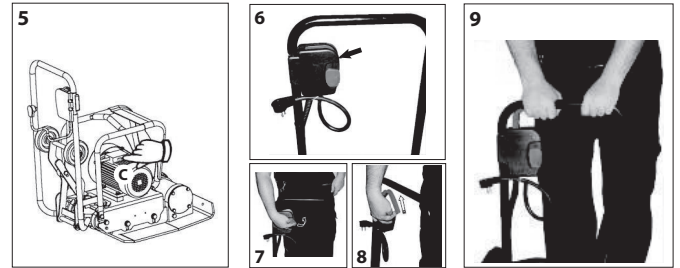
- and moving the wheels backwards B. (See Figure 2)
- Lift the vibratory compactor on the wheels (See Figure 3)

Electrical safety

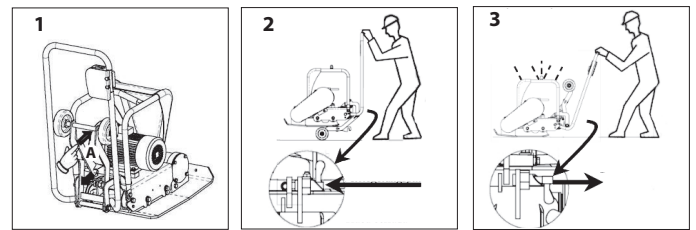
1. Only operate this machine with a power supply equipped with a 30 mA grounded 16A limiting earth leakage circuit breaker.
2. Make sure the mains voltage matches the one shown on the machine plate.
3. Extension cord: Use a cable dimension that is suitable for the power supply. Connection to the mains by means of a cable with the following dimensions: 3 x 2.5 mm² max 50 meters for 230 volts.

1. OPERATING

Starting the engine, see Figures 5-9



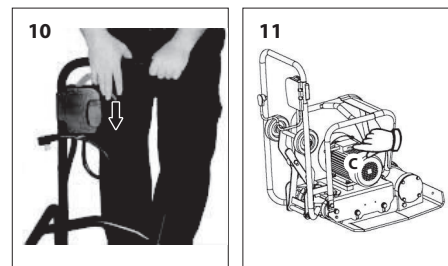
Operating the machine



1. Hoisting and locking wheels. (Fig. 1)
2. Unlock handle lock pin. Never use the vibratory compactor with a locked handle. (See Figures 2 and 3).
Figure 2 is transport position (with lock closed).
Figure 3 is use mode (with lock open).
3. This vibratory compactor is designed for the compaction of loose, grainy soils, gravel and paving.
4. Switching on the engine. (See Figure 5)
5. First, release the safety lever (See Figure 7) and then the emergency stop lever. (See Figure 8)
6. Allow the vibratory compactor to operate at normal speed and steer it in a straight line.
7. Depending on the material, usually three to four runs are required before optimum compaction is achieved.
8. The soil must be moist to achieve the best compaction.
9. Never use the vibrating plate on hard surfaces or concrete.
10. Attach a rubber mat to the underside of the vibrating plate for compaction of tiles and natural stone to prevent damage.

Stopping the engine, see figures 10-11

1. To stop the vibratory compactor release the lever on the emergency stop button. (see Figure 10)
2. Switch off the engine. (see Figure 11)



2. CLEANING AND MAINTENANCE

Daily: Remove all dirt, stones, etc. from the vibratory compactor at the end of each working day.

Maintenance and repair work may only be carried out by the rental company!

Contact your rental company should you encounter problems with the machine! The machine must be returned clean and undamaged. 1/1