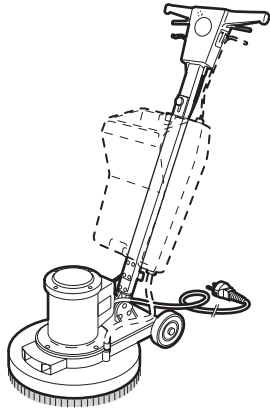


## FLOOR SANDER/POLISHER

### Instructions for safety and use

The polisher is intended for quick and thorough cleaning of vinyl, concrete and tile floors. This machine is also suitable for flooring with a special brush. The sanding machine is intended for light shading of shelf or parquet floors. The sander is equipped with a rotary sanding disc.



### Caution!

Improper handling can injure the user or damage the device. Read the safety instructions first!

## SAFETY INSTRUCTIONS



### Safety for user

- Always use grounded electrical outlets.
- Keep children and pets out of reach of the machine.
- Check that the machine is connected via a ground leakage switch (max. 30 mA).

### Safety for user / Polisher

- Never use corrosive cleaners.

### Safety for user /Floor Sander

- Machine has no dust extraction, clean the floor regularly.

### Check before use

- Machine visually for defects.
- Check plug and electric cord for any damage.
- Polisher: Attach reservoir and connecting hose to the machine.
- Sander: Attach sanding disc to the machine.
- Floor Sander: Check floor for nails, screws, etc. Remove these if present.

**Contact your rental company should you encounter any problems with the machine!**

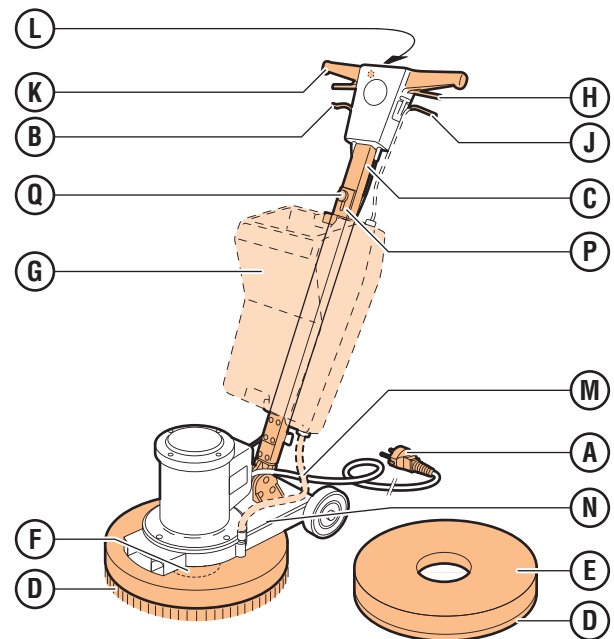
### Safety during use

- **Never** pull the power cable to move machine.
- **Never** apply the lock control lever when the machine is in operation.
- **Never** operate the machine without the brush or sanding disc attached.
- **Never** operate the machine on a wet surface when fitted with applications for dry usage.
- Do not load the machine with weights to increase work pressure.
- Lead the power cord from the rear of the machine.
- Handle the plug and power cord carefully.
- **Never** use machine with a damaged plug or power cord.
- Using an extension cable. Avoid power loss, use at minimum a 2.5 mm thick cable and keep the cable as short as possible. Unroll the cable all the way out.

### Safety after operating

- After use remove the electric plug from the wall socket

## 1. OPERATING FUNCTIONS



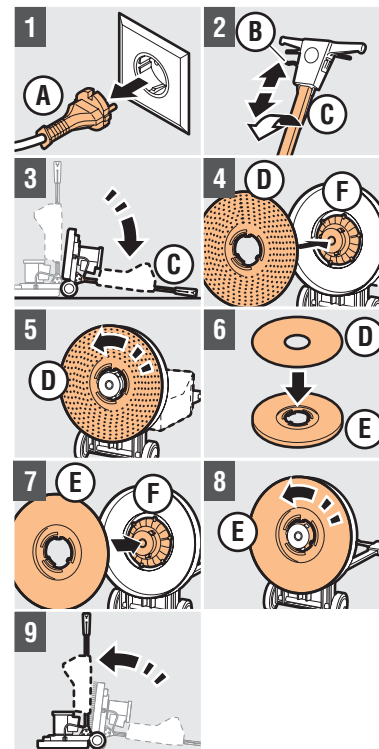
A Plug / power cord  
B Lever height adjustment  
C Operating shaft  
D Brush / Sanding disc  
E Detachable disk  
F Cams  
G Liquid reservoir  
H Control lever (2x)

J Lever fluid valve  
K Handle (2x)  
L Unlocking button  
M Supply hose  
N Swivel foot  
P Clamp plate  
Q Lock screw

## 2. PREPARATION FOR USE

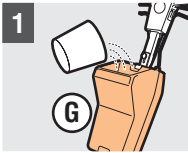
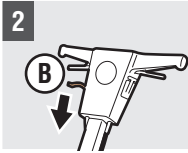
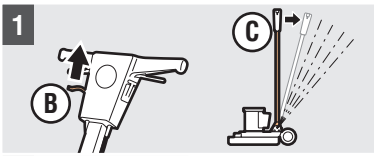
Choice of sanding disc

Consult with the rental company for the correct choice of sanding disc



### Mount brush / sanding disc

- 1 Do not plug **A** in power outlet
- 2 Pull **B**, Push in **C** all the way forward and release **B**
- 3 Place machine with **C** on the floor
- 4 **Polisher**: Press **D** Over **F**
- 5 Tighten **D**
- 6 **Floor Sander**: Press **D** into **E**
- 7 Push **E** Over **F**
- 8 Tighten **E**
- 9 Place machine in work position



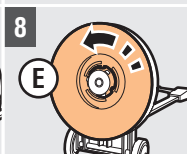
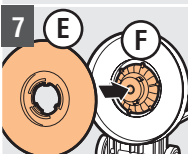
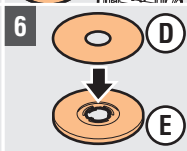
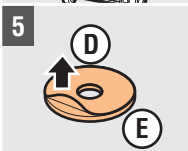
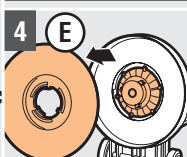
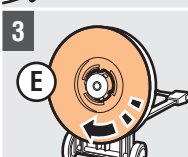
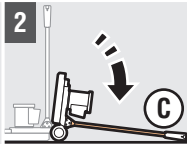
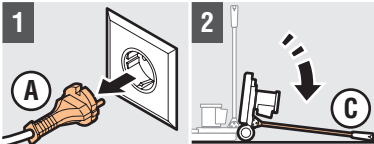
#### Set operating shaft

- 1 Pull **B**, hold **B** tight and position **C** at hip height
- 2 Release **B**

#### Polisher:

##### Use cleaning agent

- 1 Fill **G** with cleaning agent
- Caution!** Consult requirements for the cleaning agent!



#### Floor Sander:

##### Replacing sanding disc

- 1 Do not plug **A** into the power socket
- 2 Place the machine with **C** on the floor
- 3 Twist **E** loose
- 4 Remove **E**
- 5 Remove **D** from **E**
- 6 Place new **D** on **E**
- 7 Push **E** Over **F**
- 8 Tighten **E**
- 9 Set machine in working position

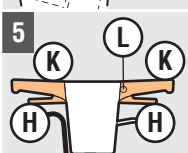
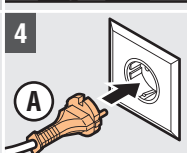
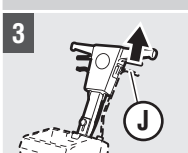
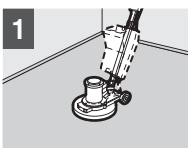
## 4. POLISHER: AFTER USE

- 1 Remove **A** from power socket
- 2 Disassemble **M** from **N**
- 3 Disassemble **F** and rinse them clean
- 4 Place **G** on **C**
- 5 Place **P** on top of **F** and lock with **Q**
- 6 Connect **M** on **F** and **N**
- 7 Clean machine

## 5. FLOOR SANDER: AFTER USE

- 1 Remove plug **A** from power outlet
- 2 Clean machine

## 3. USE POLISHER /FLOOR SANDER



- 1 Clear work floor
- Caution!** Start in the middle of the work area due to pivotal movement!
- 2 Check height **C**
- Caution!** Activating **H** is only possible with **C** at hip height!
- 3 Pull **J**
  - 4 Plug **A** in an earthed outlet
  - 5 Hold **K** tightly with both hands, press **L** and pull **H**
- Caution!** Indicator light must be on!
- 6 Clean floor with swivel motion
  - 7 Release **H**, to switch off machine

